

Lightel Video Capture Software 1.22

User's Guide

(For Lightel Connector Inspector with CI-1000-USB1.1 Video Adapter)

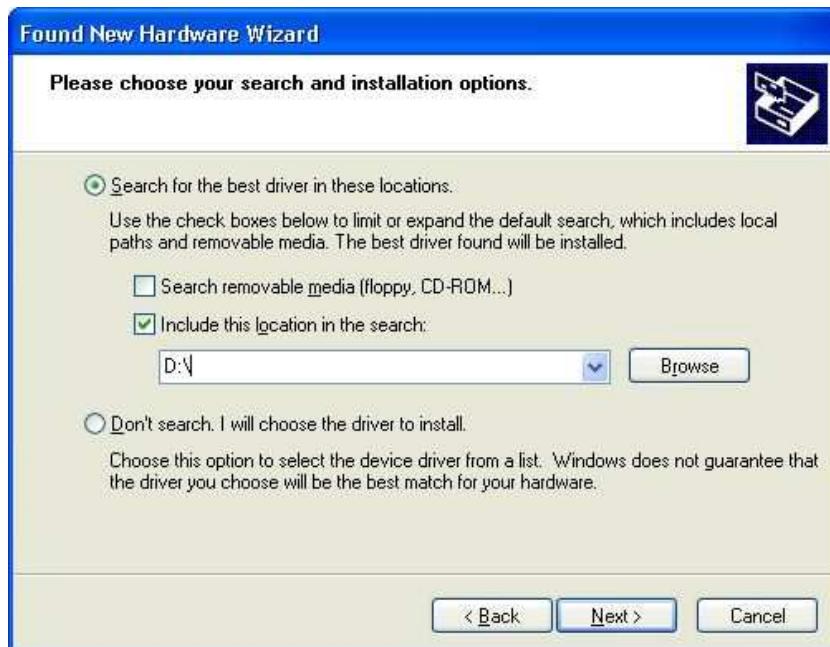
- 1. Install USB Video Adaptor Driver**
- 2. Install Lightel Video Capture Software**
- 3. Capture Single Video Image**
 - 3.1 Using Mouse
 - 3.2 Using Snapshot Button on the USB Video Adaptor
- 4. Other Functions and Settings**

This software has been tested on computers with **USB 1.1 or USB 2.0 ports; Windows 98, 2000, or XP.** *

* The Lightel CI-1000-USB1.1 video adapter is not only transferring the video signal from the inspector handset to the computer, but also draws from the +5 VDC USB line to support the inspector handset. The electrical current drawn to the handset is ~ 250mA which is well below the current-limit of a standard USB port. The USB port on some PCI board products may not meet the current-limit standard and fail to supply this current. In this case, you can purchase a special cable and an AC adapter from Lightel to allow an external power supply to the handset.

1. Install USB Video Adaptor Driver

Plug the CI-1000-USB1.1 connector into a USB port on your computer. Windows will display the following screens. (Note: the screens shown below were under Windows XP. Different screens may appear under different operating systems.):



Load the **Lightel CI-1000-B Fiber Connector Inspector 'Driver & Software' CD** into the CD drive on your computer and use [Browse] to find the file path to this CD driver. Click [OK], after a few seconds, you will see the next screen.



Click [Continue Anyway], you will see the following screens:

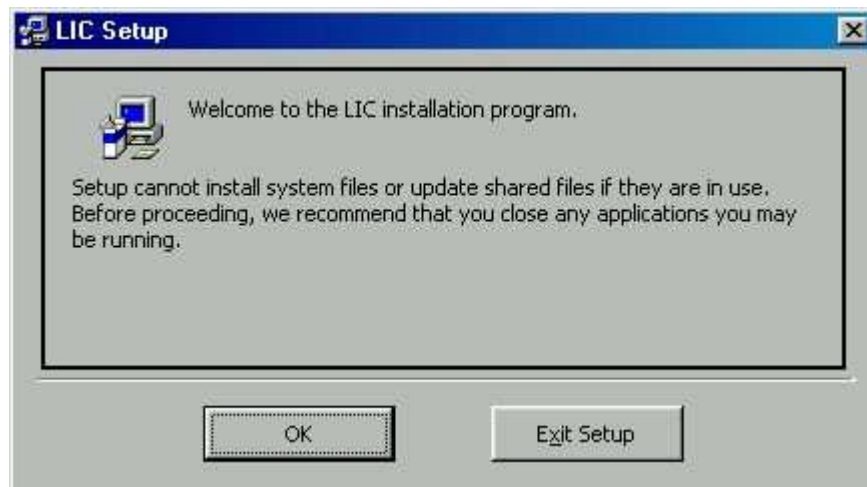




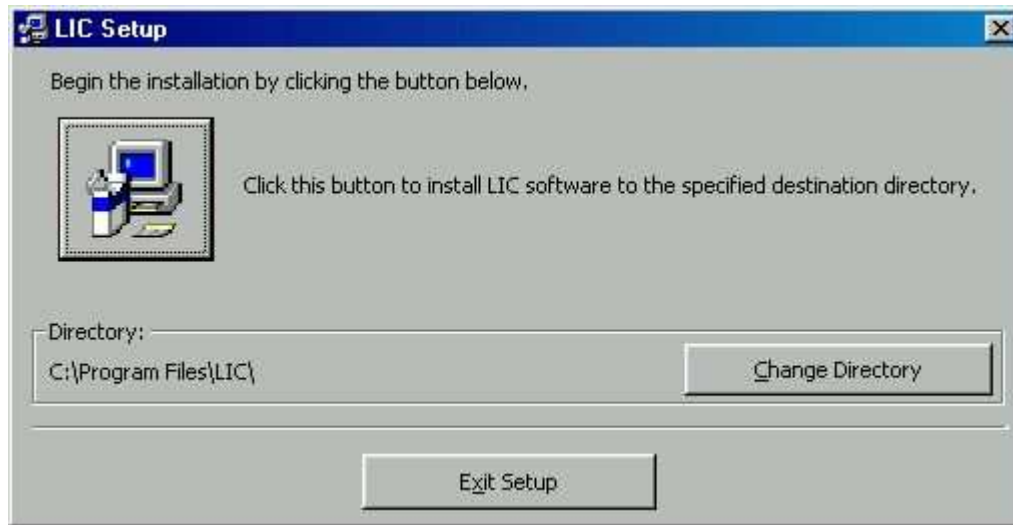
Click [Finish] to complete the USB video capture adaptor driver installation.

2. Install Lightel Video Capture Software

Run program Setup.exe in the **Lightel CI-1000-B Fiber Connector Inspector 'Driver & Software' CD**. An installation screen will appear:



Click [OK], you will see:



Accept the default installation folder "C:\Program Files\LIC\" or select your own folder, click the installation icon. After a few seconds, the installation is finished.



3. Capture Single Video Image

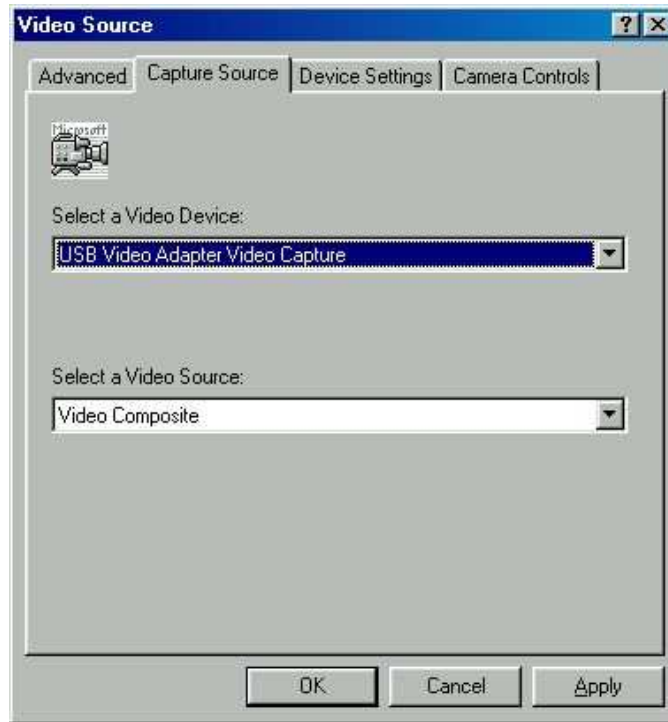
3.1 *Using Mouse*

Run the program by clicking on the program icon of “LIC122.exe” in the installation folder, you will see the following screen:



Note that if you have connected more than one video device to your PC, you need to select the correct video device as follows:





Under the factory default setting, the option of 'Border Frozen' is checked (see the picture below) and the image screen size is locked.



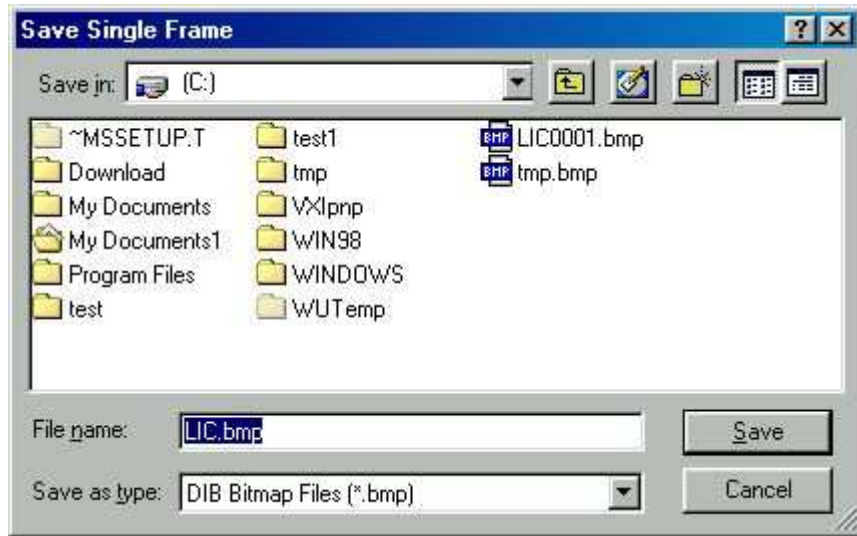
You can unlock the 'Border Frozen' by unchecking this option. With the 'Border Frozen' unchecked, the screen border becomes stretchable and the image can be resized.



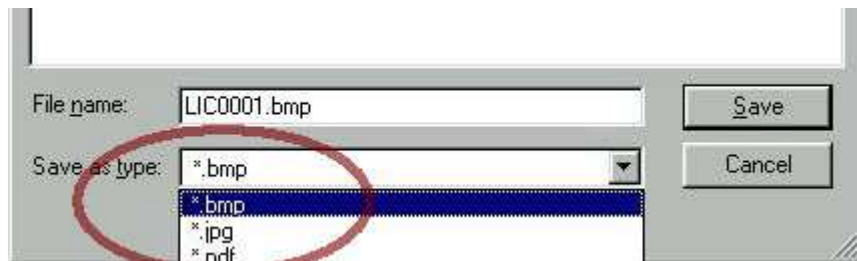
To capture an image, you first need to specify the location of your saved image file as well as the base name of the file, through “Save Captured Image As...” as shown in the picture. (The name of an image file consists of a base name, which can be defined from empty to any combination of letters and/or numbers, and an automatically suffixed 4-digit number, starting from “0001”. For example, if you specify a base name as “ASD”, the captured images will be automatically named as “ASD0001”, “ASD0002”.... in succession.)



The software provides a default file location at “C:\” and a default base name as “LIC”. This means, if you do not specify a file location and a base name, the captured images will be automatically saved as LIC0001, LIC0002, under “C:\”. You can re-specify the base name and file folder path anytime in your operation:



You also need to choose the file type: bmp, jpg, or pdf.



Now you are ready to capture images. You can capture an image through the menu item “Capture Single” or simply by pressing the computer keyboard function key F12:



The captured image will be displayed in a separate screen (called “Captured Image” screen) with its filename and its path:



Each time after you press F12 key, this screen is updated with the latest captured image and its filename.

3.2 Using Snapshot Button on the CI-1000-USB1.1 Video Adaptor

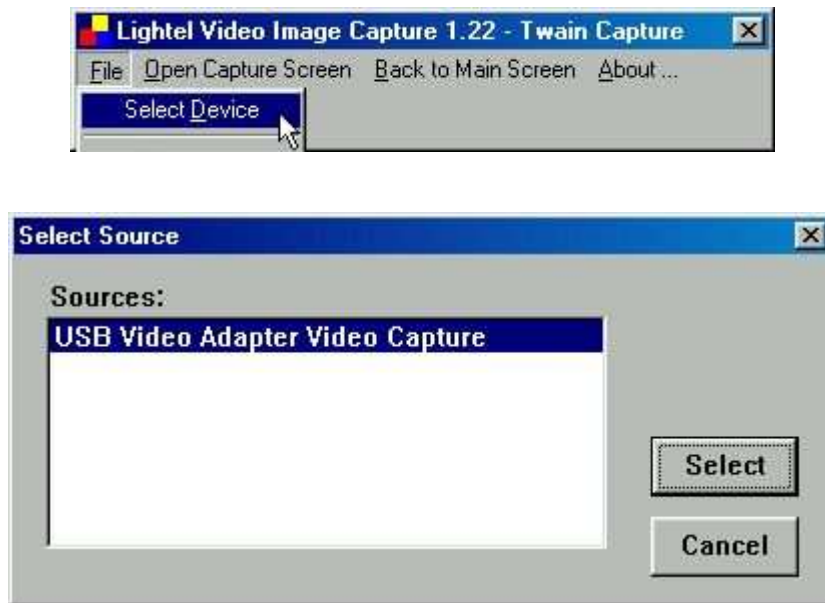
Select the menu item “Twain Capture”:



A twain control screen will appear:



If you have installed more than one twain device drivers in your computer, you should first select the right one:



Then click the menu item “Open Capture Screen”; you will see the following screen:

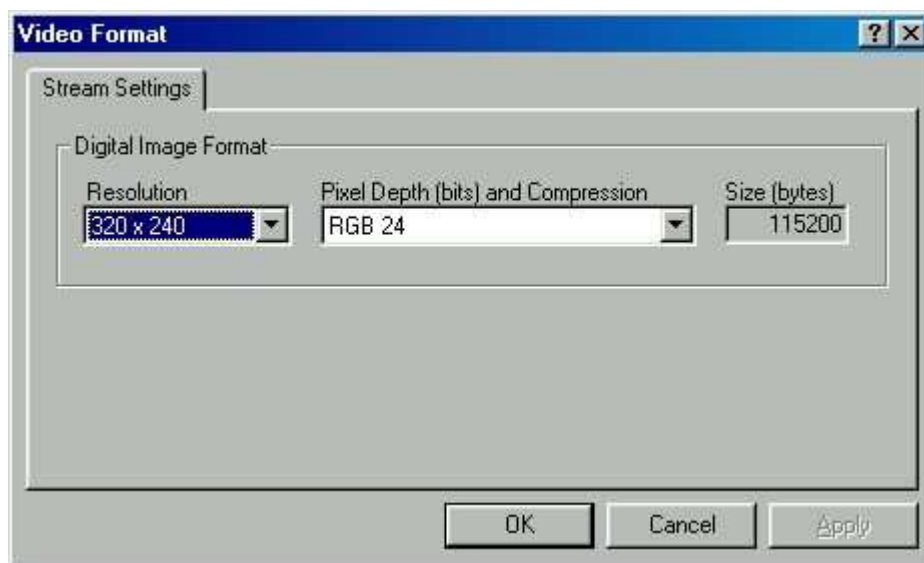


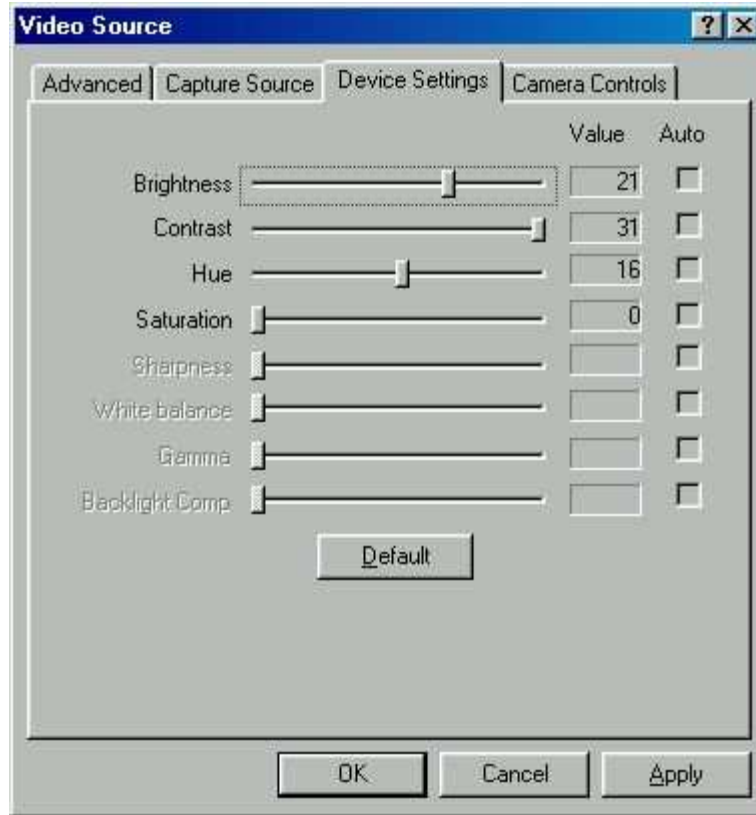
In this “USB Video Adapter Video Capture” screen, you can adjust the brightness and contrast of the image. Now, each time when you press the snapshot button on the USB Video adapter, the “Captured Image” screen will be updated with the latest captured image and its file name. (Pressing the “Capture Still Image” button on the “USB Video Adapter Video Capture” screen will be equivalent to pressing the snapshot button on the USB Video adapter.)

Close this screen, you will come back to the program main screen.

4. Other Functions and Setting

From following menu items and screens you can select your video device setting, including video standard, resolution, brightness, contrast and much more:





Note: The “Camera Controls” setting is not applicable to this application.

050808