

## 1.1 CI and ViewConn 32-bit Systems (other than Windows 7)

**CI-1000/CI-1100:** Attach the handset probe to the CI-1000-USB2 Video Capture device and plug the USB cable into your computer. Windows will automatically display the screen below.

**ViewConn:** Attach the mini-B USB cable to ViewConn and plug the cable into your computer. Windows will automatically display the screen below.

*Note: the screens shown below are for Windows XP. Screen images may differ with other operating systems.*

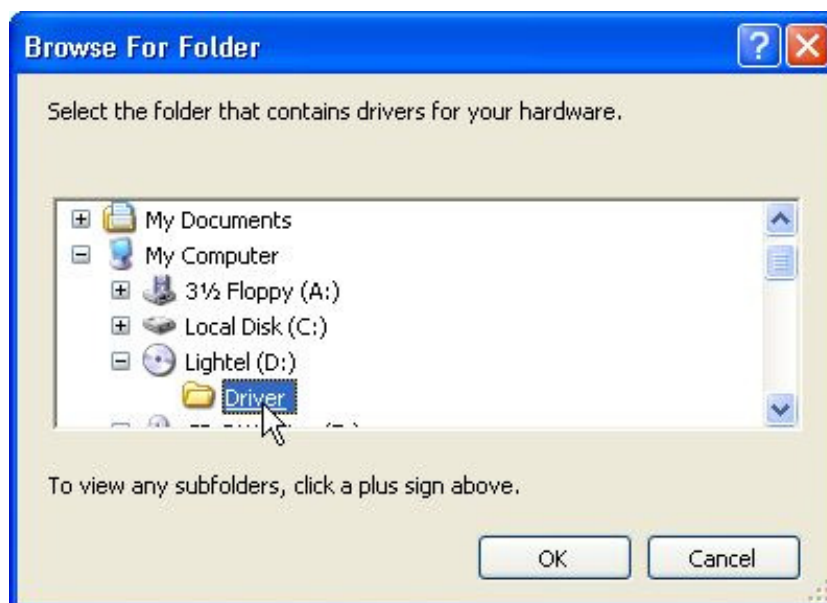


Click the “No, not this time” radio button, then click [Next].

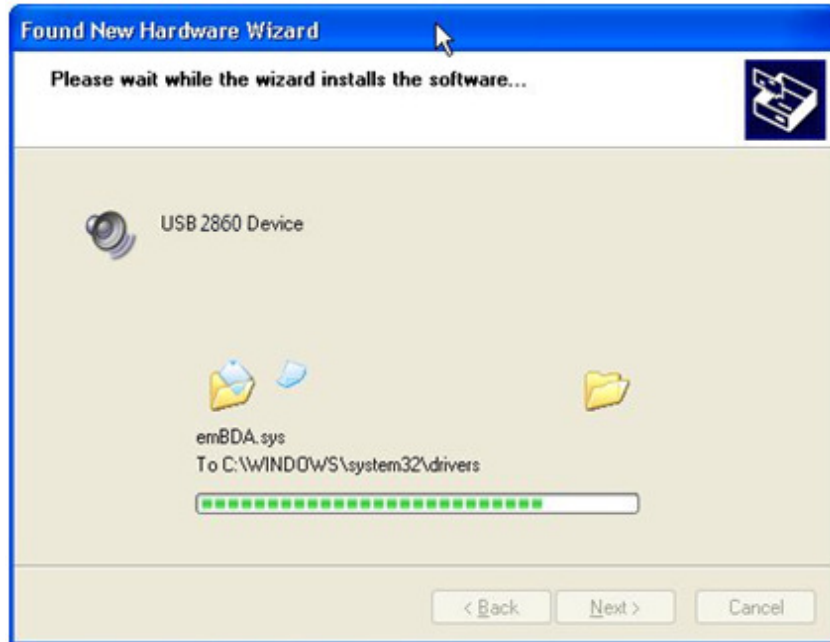


Click the “Install from a list or specific location (Advanced)” button, and then click [Next].

Load the **ConnectorView v3 Driver & Software CD** into the CD drive of your computer and use [Browse] to point the file path to folder “32-bit Driver” within the “CI and ViewConn Folder”.



Click [OK]. After a few seconds, you will see the following screens.



Click [Next].



Click [Finish] to complete the USB video driver installation.

## 1.2 CI and ViewConn with Windows 7 32-bit Systems

*Before attaching your Lightel USB device,*  
*disconnect from the Internet.*

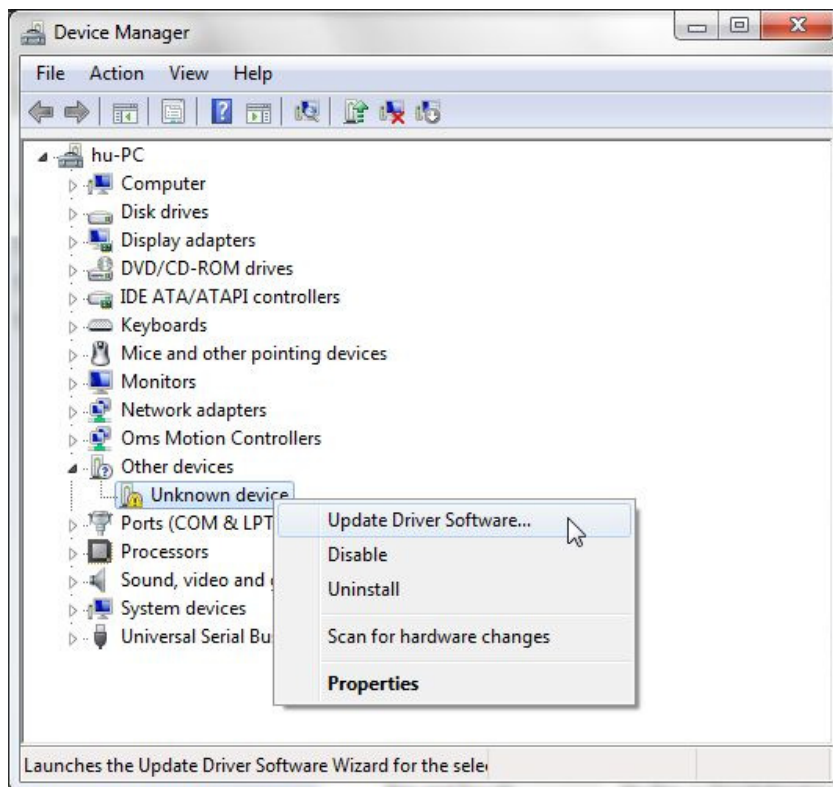
Load the **ConnectorView v3 Driver & Software CD** into the CD drive of your computer and attach your CI or ViewConn USB device.

Windows 7 will soon display a message that the driver installation was unsuccessful. This is normal without an Internet connection.



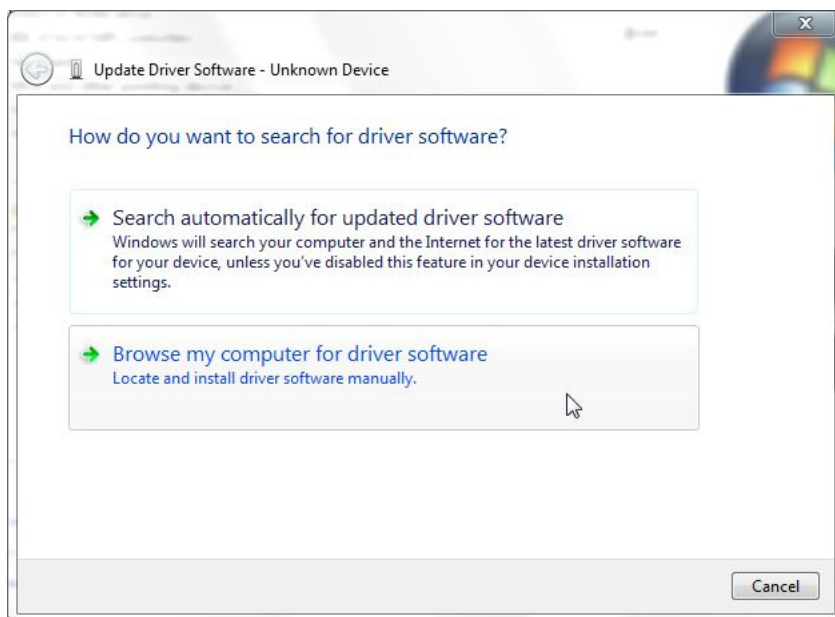
Left click on the “Start” button and open the Control Panel.

Open the Device Manager and select the “Unknown Device” under “Other devices.”

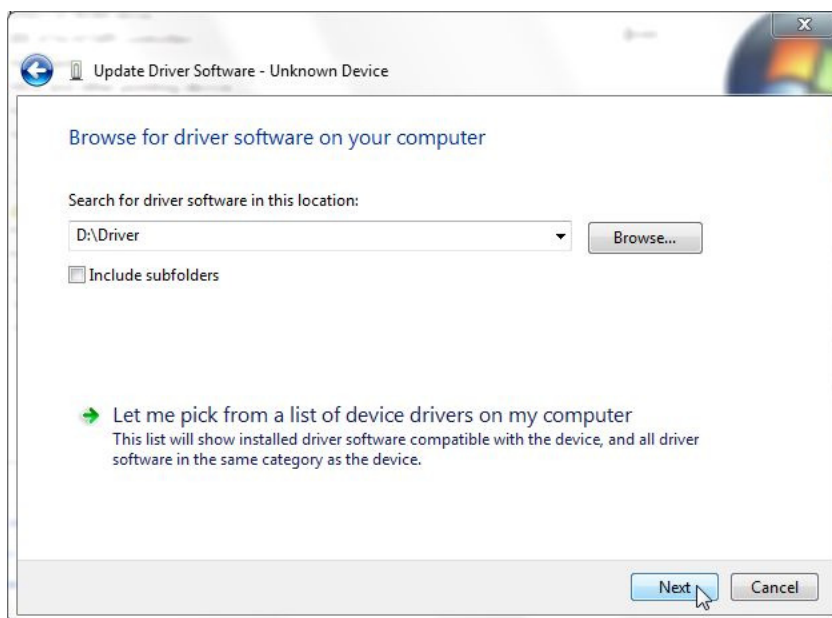


Right click to open the menu and select “Update Driver Software...”

Select “Browse my computer for driver software”



Use the “Browse” button to point the file path to the folder “32-bit Driver” within the “CI and ViewConn Folder” and then left click on it so that the path shows in the address bar. Click [Next].



The USB 2860 video driver will be installed and will now be listed in your Device Manager.

